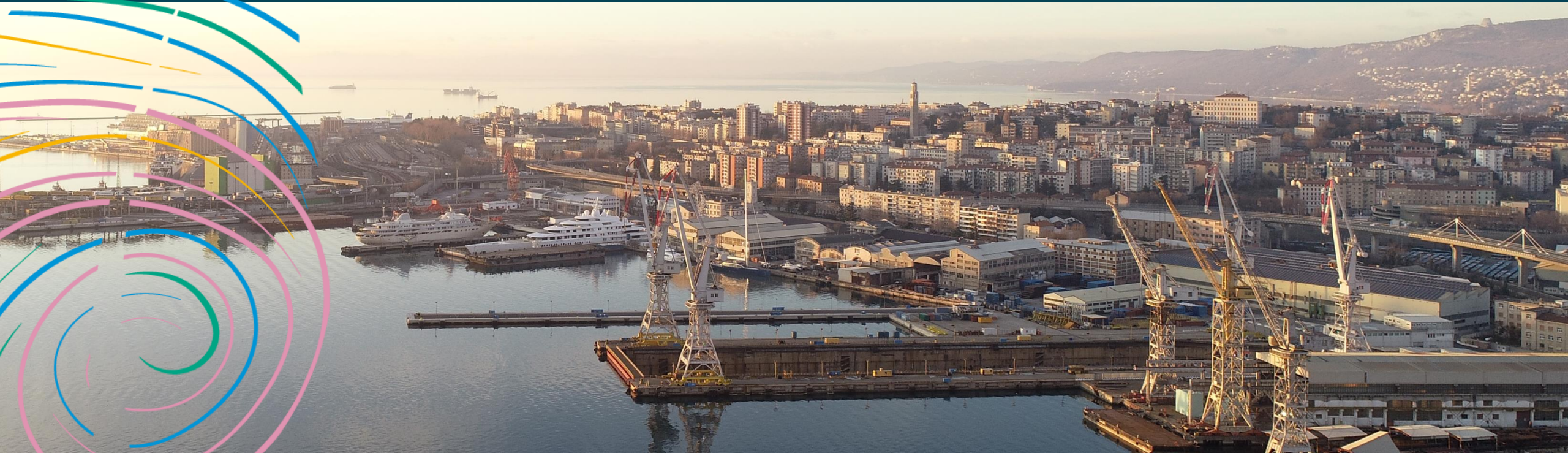


# TREASURE

Testing novel environmental  
quality measures in and  
around Euro-MED ports



**2nd WEBINAR, 27 March 2026**

**“Implementing Innovation in Mediterranean Ports: From the TREASURE  
Catalogue to Practice”**



**TREASURE**

**Interreg**  
Euro-MED



Co-funded by  
the European Union



Human activities are causing **unprecedented environmental changes** in coastal and marine ecosystems.

Port areas become both the final accumulation site for chemicals from anthropic activities and a cause of **pollution that is difficult to contain**.

This represents a significant **environmental risk for marine biodiversity** and surrounding areas that TREASURE aims to mitigate.



**TREASURE aims to improve environmental quality in and around Mediterranean ports by reducing sediment and water pollution.**

To this end, project partners created an **innovative transnational approach** to testing and experiment **new techniques for the remediation** of degraded and polluted port areas.

## TREASURE in numbers



TOTAL  
BUDGET

€ 2.501.521,50



PROJECT  
DURATION

36 months  
Until  
December  
2026



MED PORT AREAS  
INVOLVED

7



## Our area of interest

TREASURE operates in several ports, specifically **Port of Valencia** (Spain), **Port of Toulon** (France), **Port of Livorno** (Italy), **Port of La Valletta** (Malta), **Port of Piraeus** (Greece), **Port of Durres** (Albania) and **Port of Bar** (Montenegro) but aims at transferring its results to the overall Mediterranean area.





LEAD PARTNER  
Agency for the Development  
of the Empolese-Valdelsa



Italian Institute for Environmental  
Protection and Research

---



Port of Bar

---



Valenciaport Foundation for research,  
promotion and commercial studies  
of the Valencian Region

---



Durres Port Authority



Pôle Mer Méditerranée –  
Toulon Var Technologies

---



Transport Malta

---



Piraeus Port Authority

---



Central European Initiative -  
Executive Secretariat

## TREASURE approach involves 3 action lines which correspond to as many work packages

1. **WP1** — Multi-stakeholder, cross-sector governance solutions, designed for the creation and management of territorial labs (mini-labs: capitalization tool), as well as to introduce improvements to policies and regulations
2. **WP2** — New approaches to environmental assessment, through the “Lines of Evidence”, for a qualitative evaluation of different compartments (sediments / water / biota) of the port environment
3. **WP3** — **Identification and Testing of novel techniques for environmental remediation in sediments and water, in and around port areas.**



<https://heyzine.com/flip-book/d9de0aced5.html#page/1>

# Programme

Time	Session	Speaker
10:00 – 10:10	Welcome and Introduction to the TREASURE Project	Anna Marconato - CEI-ES
10:10 – 10.25	Connecting Innovation to Port Needs: The TREASURE Call, Catalogue and Matchmaking Strategy	Corentin Sanguinetti - Pôle Mer Méditerranée
10:20 – 10:45	Implementing Innovation in Port Areas: Experiences from TREASURE Port Representatives	Ilija Milic - Port of Bar Mevric Zammit -Transport Malta Alessio Castagnoli- ISPRA Arlinda Bazina - Durres Port Authority
10:45 – 11.15	Solution–Demand Matching in Practice: Insights from the Port of Valencia	Javier Busquet Mataix – Marine Robotics Pablo Palomo – Fundacion Valencia Port
11:15 – 11:30	Q&A	

# Upcoming opportunities

## Webinar 3 – Environmental Impact Assessment: the TREASURE experience

- Date: 7 May 2026, 10:00–11:30 CET
- Focus: Environmental quality assessment matrix (LOE), indicators, and assessment tool

**Final Conference in Toulon (in September, date tbc)**



# THANK YOU!



**TREASURE**

**Interreg**  
Euro-MED



Co-funded by  
the European Union